

# THE TOP Women in Fleet

These women have not only proven expertise in their field, but have also earned the respect of their colleagues as the most influential fleet managers and fleet professionals in the industry.

What was once considered a predominantly male industry now overflows with an abundance of talented and skilled female professionals. Featured over the next four pages are those who stand out among the long list of women who have made a difference — those who have demonstrated success in their own specific organizations, as well as in industry associations, and serve as an example to the rest of their peers.

On the fleet management side alone, these 25 women include Fleet Hall of Fame inductees, Professional Fleet Manager of the Year and Fleet Executive of the Year honorees, and a finalist for the International Fleet Manager of the Year. 📱

## 25 OF THE TOP WOMEN FLEET MANAGERS



**Theresa Belding**

Senior Manager of Fleet Services  
Forest Pharmaceuticals

**Career highlights:**

- 2011 Professional Fleet Manager of the Year.
- Grew fleet from 250 units to 3,200 over 19-year period.
- Reduced accidents by 30 percent in three years.
- AFLA past president and conference chair; former chair of NAFA St. Louis Gateway Chapter.



**Donna Bibbo, CAFM**

Manager, Fleet & Travel  
Novo Nordisk

**Career highlights:**

- Three-time nominee for Professional Fleet Manager of the Year.
- Grew fleet from 1,260 units to 4,000 in six-year period.
- NAFA New Jersey Chapter chair and treasurer, chair of National Audit Committee, FleetEd Advisory Council, and Safety Advisory Council; AFLA director at large, secretary; co-chair of AFLA Education Committee, and AFLA Arrangements Committee member.



**Shirley Collins, CAFM**

Director, North America Fleet  
GlaxoSmithKline

**Career highlights:**

- 2000 Professional Fleet Manager of the Year and 2011 Fleet Hall of Fame inductee.
- Saved company \$44.4 million since 2001 through contract negotiations, vehicle selections, and automation of processes.
- Served in various capacities within AFLA and NAFA, as well as industry advisory boards.

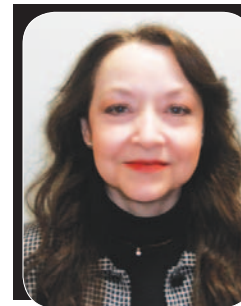


**Christy Coyte Meyer**

Corporate Global Fleet Director  
Johnson Controls Inc.

**Career highlights:**

- 2009 Professional Fleet Manager of the Year.
- Year-over-year GHG reductions and improvements in fuel efficiency.
- Improved fleet operations in Europe since standardizing documentation and processes.
- Vice chair, NAFA Great Lakes Chapter; member of LeasePlan Global and U.S. Advisory Boards.



**Brenda Davis**

Strategic Sourcing Fleet Commodity Mgr.  
Baker Hughes

**Career highlights:**

- Two-time nominee for Professional Fleet Manager of the Year.
- Consolidated 11 business units for a savings of more than \$10 million.
- Serves on OEM and FMC advisory boards.
- Integrated 2,500 vehicles into fleet without increasing staff.
- Reduced costs and saved millions through ongoing process improvements and negotiations.



### Louise Davis-Lopez, CFM/CAFM

Fleet Manager,  
Johnson & Johnson

#### Career highlights:

- Two-time nominee for Professional Fleet Manager of the Year.
- Significant cost savings through revised supplier negotiation methods and vehicle recondition program; created Fleet Excellence Program to recognize J&J operating companies that meet and exceed fleet performance goals.
- J&J recognized as Sustainability All-Star three years in a row, as well as a Top 50 Green Fleet.
- Past NJ NAFA Chapter Chair and current Treasurer, board member, and National Audit Chair; helped develop and launch first NAFA-sponsored pharma survey.

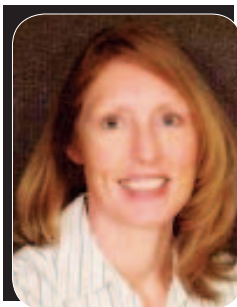


### Lynda Dinwiddie

VP of Fleet & Travel  
LabCorp

#### Career highlights:

- 2007 Professional Fleet Manager of the Year.
- Client Advisory Board member for: Fleet Response, AFLA, and General Motors (co-chair).
- Improved driver compliance as it relates to preventive maintenance, which, in turn, has kept maintenance costs level where other fleets have seen an increase.
- Manages a 5,000-vehicle fleet that averages 100,000 miles in 30 months and drove down effective depreciation over the past five years.



### Wendy Dymkowski

Fleet Administration Manager  
Bristol-Myers Squibb

#### Career highlights:

- Implemented a comprehensive driver safety program, leading to year-over-year accident cost savings.
- Transitioned from six- to four-cylinder engine fleet to meet corporate sustainability goals.
- Improved fleet fuel economy by 14 percent over five years.
- NAFA Audit chair and past Philadelphia NAFA treasurer; AFLA member; and Women in Fleet Management (WIFM) member.



### Sheryl Grossman

Fleet Manager  
GE Healthcare

#### Career highlights:

- Doubled fleet size with no additional head count, while developing programs to provide customer service to drivers reducing their administrative burdens.
- Acts as mentor for new fleet administrators/managers to help develop their expertise.
- Introduced EVs into 1,800-plus fleet.
- NAFA secretary for 2010-2013, past Central Region trustee, Wisconsin Chapter chair, NAFA education chair, I&E Curriculum chair, Safety, Membership and Program Committees; advisory board member for Ford, WEX, and GE Capital Fleet Services.



### Janet Horvath

Supply Chain Manager - Global Fleet  
& Travel Eaton

#### Career highlights:

- Global fleet responsibility to meet corporate cost reduction goals and sustainability initiatives.
- Led cross-functional team (HR, Operations, Finance) on policy, supplier selection, and program management.
- Led sourcing process and transition from an unbundled fleet program to an outsourced service model.
- Board member, General Motors Commercial Sounding Board and LeasePlan Client Advisory Board.

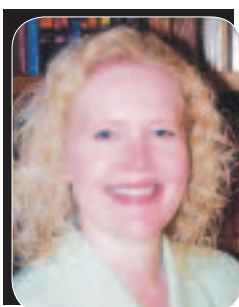


### Kimberly Jamme

Manager, Sales Operations Fleet & Safety  
TEVA

#### Career highlights:

- Responsible for strategic development and implementation of fleet and safety program.
- Created a comprehensive environmental program, as well as managing a Category Management initiative.
- Responsible for \$4 million in annual savings.
- 16-plus years in fleet management.



### Rachel Johnson, CAFM

Fleet Specialist  
Konecranes

#### Career highlights:

- Developed a unified multi-entity fleet program.
- Manage fleet of 1,300 vehicles for key strategic business areas.
- Key member of global fleet strategic team.
- Established fleet safety program with management and FMC.
- Acquired CAFM certification in 2008.
- Served as NAFA Tri-State Chapter Chair, 2009-2010.

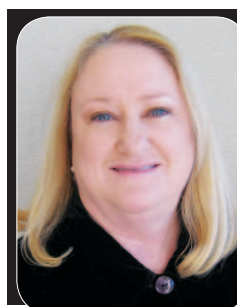


### Lisa Kneggs

Fleet Manager  
Associa

#### Career highlights:

- Nominee for 2005 Professional Fleet Manager of the Year.
- Took over responsibility of 1,200 vehicles within first 18 months of career.
- Centralized five different fleets.
- AFLA board member, Conference Planning Committee member, and recipient of 2012 AFLA Presidents Award.



### Ginny Liddle, CAFM

Corporate Fleet Administrator  
Terracon

#### Career highlights:

- Founding member of Women in Fleet networking group.
- Former NAFA Chapter Chair and Board of Governors member.
- LeasePlan USA Advisory Board member.
- Twenty-four years in fleet.



### Shelly Lofgren

Fleet Manager - North America  
Honeywell

#### Career highlights:

- Member, GE Capital Fleet Services Client Advisory Board.
- Member, General Motors Global Sounding Board.
- Member, AFLA.
- Member, NAFA.



### Diane Lopez

Manager, Corporate Fleet  
Abbott

#### Career highlights:

- Nominee for 2008 Professional Fleet Manager of the Year.
- 2010 Environmental Leadership Award recipient.
- Served as secretary, chair, and current vice chair of the NAFA Chicago Chapter.
- PHH Advisory Board Member.



### Elsie Lucia

Executive Director,  
Fleet and Purchasing Services  
Estee Lauder

#### Career highlights:

- Heavily involved in AFLA, serving as past president (2007-2008), board of directors, and past chairperson for the AFLA Annual Meeting & Conference.
- Past chapter chair of NAFA New Jersey chapter and editorial chair of NAFA national.



### Lee Miller

Senior Manager of Fleet Services  
Boehringer Ingelheim

#### Career highlights:

- 2012 Professional Fleet Manager of the Year.
- Cost savings exceeds \$10 million.
- Deployed thousands of additional vehicles for three sales force expansions.
- NAFA Chapter chair, vice chair, and secretary; AFLA member and past secretary; Wheels and Fleet Response Client Advisory Boards; GM Commercial Sounding Board.



### Susan Miller, CAFS

Manager, Fleet Program Services  
McDonald's

#### Career highlights:

- 2012 Fleet Hall of Fame inductee.
- 1998 Professional Fleet Manager of the Year.
- AFLA member, past VP & president, recipient of 2010 AFLA Presidents Award, and current chair of commercial fleet sounding board.
- Founding member of Women in Fleet networking group.



### Debbie Mize

Corporate Services Manager, Fleet & Relocation  
Hallmark

#### Career highlights:

- 2012 Fleet Hall of Fame inductee.
- 1995 Fleet Manager of the Year.
- Held all NAFA chapter offices; received Outstanding Chapter Service Award; national NAFA Educational chairperson; served as AFLA treasurer; and served on several OEM fleet advisory boards.



### Suzen Moye, CAFM Lifetime Status

Sr. Manager, N. A. Employee Transportation  
sanofi

#### Career highlights:

- Two-time nominee for Professional Fleet Manager of the Year.
- Harmonized eight U.S. affiliate fleet policies into single N.A. fleet policy.
- Implemented strategies to consolidate five FMCs for improved internal and external supplier operations.
- Served as NAFA nat'l board member & Eastern Region Trustee; NJ Chapter chair, secretary, membership & program chairs; member of PHH Arval & GE Client Advisory Boards.



### Gayle Pratt

Director Global Fleet  
Ecolab

#### Career highlights:

- Corporate and public sector fleet leader for 30-plus years.
- NAFA president 2007-2009, 13 years as a volunteer officer and trustee; and recipient of 2010 Distinguished Service Award.
- 2012 Sustainability All-Star and NAFA Sustainable Fleet.
- 2008 International Fleet Manager of the Year Award runner-up.



### Theresa Ragozine

Worldwide Director, Travel & Fleet  
Johnson & Johnson

#### Career highlights:

- 2006 *Fleet Financials* Fleet Executive of the Year.
- J&J recognized as Sustainability All-Star three years in a row, as well as a Top 50 Green Fleet.
- Instituted Deals on Wheels, a multinational employee sales Intranet site contributing to more than \$25 million in savings.
- Developed a flexible replacement policy resulting in lowered effective depreciation rates.



### Beth Stamer

Director, Global, Health, Safety & Environment — Affiliates  
Eli Lilly and Company

#### Career highlights:

- Designed and implemented Lilly USA's first comprehensive fleet safety program.
- Developed and implemented Global Motor Vehicle Safety Standard (requirements) for all Lilly sales affiliates around the world.
- Developed Global Collisions Per Million Mile (CPMM) metric (goal) and expanded data submission process to all Lilly sales affiliates worldwide.



### Jann Stapleton, CAFM

Manager, Corporate Fleet  
Safeway

#### Career highlights:

- Corporate fleet manager for 11 years.
- Managed 1,300-1,800 vehicle fleets at two major retail companies.
- Completed CAFM certification in September 2012.
- Member of Ford Fleet Advisory Board and Wheels Steering Council.

## TWO TOP WOMEN OF YESTERYEAR

*Automotive Fleet* would also like to recognize two female pioneers in fleet who are no longer with us today. Helen Bland from Hallmark and Helen Smorgans from Johnson & Johnson have both been inducted into the Fleet Hall of Fame.



BLAND



SMORGANS





# TOP WOMEN FLEET PROFESSIONALS

In addition to fleet managers, AF is also recognizing the top women working on the supplier side of the fleet industry. With a combined total of more than 430 years of experience, these women have been instrumental in helping fleets run successful and cost-effective operations. Bios of these influential women will be available in the expanded online version of this article.



**Marty Betagole**

President  
Mike Albert Fleet Solutions



**Amy Blair**

CFO  
Sutton Leasing



**Caroline Costello**

Regional Account Executive  
Chrysler



**Katherine Croze**

National Sales Manager  
CEI



**Carolyn Edwards**

VP, Manufacturer Relations and  
Business Solutions  
LeasePlan USA



**Deb Frodl**

GE Global Alternative Fuels Leader  
& Chief Strategy Officer  
GE Capital Fleet Services



**Cindy Gippert**

Business Development Manager  
Adrian Steel Company



**Norma Havens**

National Sales Manager  
USA Fleet Solutions



**Mindy Holman**

President and CEO  
Holman Automotive Group Inc.



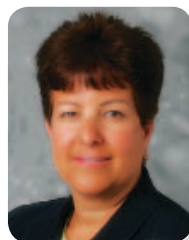
**Sharon Jones**

Manager, Fleet Business Relations  
Chrysler



**Beth Kandrysawtz**

CFO  
The MotorLease Corp.



**Tina Kourakos**

Manager, National Commercial  
Fleet Accounts  
Subaru of America, Inc.



**Allison Lanzilotta**

VP of Business Development  
Fleet Response



**Susan Lombardo**

VP of Vehicle Acquisition  
Enterprise Holdings



**Joyce Mattman**

Director of Commercial Product  
and Specialty Vehicles  
General Motors



**Mary Ann Moeri**

Regional VP  
PHH Arval



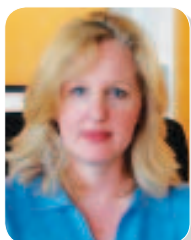
**Pam Nicholson**

President and COO  
Enterprise Holdings



**Mary Ann O'Dwyer**

SVP Finance & Operations, CFO  
Wheels Inc.



**Doreen Paris**

Fleet Account Manager  
Volkswagen of America



**Lori Rasmussen**

President  
PARS Inc.



**Jennifer Schade**

Manager of Vehicle Remarketing  
ARI



**Linda Silverstein**

Manager, Rental & Remarketing  
Ford Motor Co.



**Mary Sticha**

Senior VP and General Manager,  
Commercial Programs  
GE Capital Fleet Services

SCAN THE QR CODE OR GO TO [WWW.AUTOMOTIVE-FLEET.COM](http://WWW.AUTOMOTIVE-FLEET.COM) TO READ THE EXPANDED ONLINE ARTICLE.

